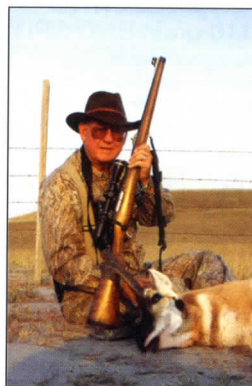


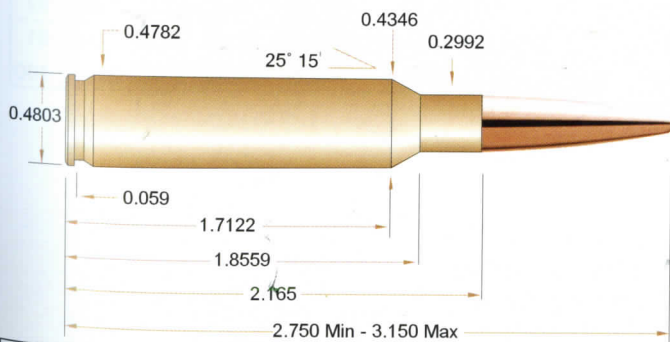
Before ordering a Walkabout carbine from Serengeti Rifles, Inc., I thought long and hard about cartridge selection. The rifle would be used for hunting deer and pronghorn, along with possibly a few coyotes. Too, I wanted a European chambering instead of a typical American cartridge.

I chose the 6.5x55mm Mauser (a.k.a. "Swede"), which was even more venerable than the .30-06, and boasted a similar military and sporting heritage. Adopted by both the Swedish and Danish military in 1894, the 6.5x55 has long been a popular hunting and target round. A survey once showed more Scandinavian moose had been killed with the 6.5x55 than with all other cartridges combined.



A mild-mannered round with downright civilized recoil, the 6.5 Swede won its spurs with long, 160-grain (or heavier) bullets that delivered outstanding penetration. The 120-grain Triple-Shock handloads I feed my Serengeti carbine shoot flatter and—if anything—penetrate even better. I've yet to recover a TSX bullet from any game I've taken with one.

Because of the aging 6.5x55 rifles still in service, SAAMI specifies a maximum pressure of 51,000 psi. Ammunition loaded to that pressure provides all the punch I need, along with the excellent accuracy this cartridge is famous for. While slightly warmer loads may be safe in modern rifles of good condition, handloaders should not exceed the loads recommended in this manual.—Clair Rees



Case: R-P	Primer: Federal GM210M
Case Trim Length: 2.155"	Barrel Length: 24"
Twist Rate: 1:8"	Barrel: Wiseman

*This load data was test fired up to SAAMI maximum average pressure of 51,000 psi.



110-grain BND SPIT

Sectional Density .225
Ballistic Coefficient .452
C.O.A.L 2.980"

Suggested Bullet Use



Powder Brand	Minimum		Maximum		Load Density (%)
	Charge (grains)	Velocity (fps)	Charge (grains)	Velocity (fps)	
IMR 4831	43.0	2668	47.0	2905	98
XMR 3100	43.5	2681	47.5	2899	100
Mag Pro	49.0	2768	54.5	3007	100
VIT N165	43.0	2715	48.0	2920	96
*RL 22	45.5	2737	49.0	2931	98
IMR 7828SSC	45.0	2635	49.0	2866	95



120-grain TSX BT

Sectional Density .246
Ballistic Coefficient .381
C.O.A.L 2.950"

Suggested Bullet Use



Powder Brand	Minimum		Maximum		Load Density (%)
	Charge (grains)	Velocity (fps)	Charge (grains)	Velocity (fps)	
IMR 4831	40.5	2519	44.5	2744	93
XMR 3100	41.5	2541	45.5	2751	96
Mag Pro	46.0	2568	51.0	2814	93
*RL 22	41.0	2530	46.0	2762	92
IMR 7828SSC	43.0	2498	47.0	2718	91
H1000	45.5	2485	50.0	2707	100

Maximum loads should be used with caution - Always Start With Minimum Loads.

* Most Accurate Load

6.5 X 55 Swedish Mauser



130-grain TSX FB

Sectional Density .266
Ballistic Coefficient .363
C.O.A.L 2.950"

Suggested Bullet Use



Powder Brand	Minimum		Maximum		Load Density (%)
	Charge (grains)	Velocity (fps)	Charge (grains)	Velocity (fps)	
IMR 4831	39.0	2349	43.0	2568	92
XMR 3100	39.5	2376	43.5	2574	94
Mag Pro	44.0	2443	49.0	2655	92
*RL 22	39.0	2399	44.0	2594	91
IMR 7828SSC	41.0	2365	45.0	2584	90
H1000	43.5	2370	47.5	2557	98

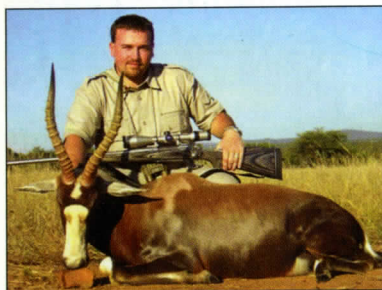
Maximum loads should be used with caution - Always Start With Minimum Loads.

* Most Accurate Load



"I worked up a 180-grain TSX load for my .300 RUM to take this caribou in Alaska. This kind of performance is exactly why we only hunt with the TSX, and why it's revolutionizing the high-performance hunting bullet industry. My Barnes hat says it all, 'The Tracks Stop Here'!"
—Bill De Haan

I was shooting a .300 Winchester Magnum with handloads of Barnes' 180-grain MRX bullets to take this red hartebeest.
—Bob Pew



"While I hunted in the Northern Province of South Africa, my PH guides were very doubtful of my .300 Ultra Magnums' capabilities. Loaded with the 180-grain Triple-Shock bullets, it proved to be more than enough. Thanks for the outstanding product performance and many one shot kills." —Carey Samford

Wide and heavy describes this choice Canadian moose taken by Tracy Burton, of Double Diamond Outfitters. She used her trusty .257 Roberts firing a 100-grain TSX.

